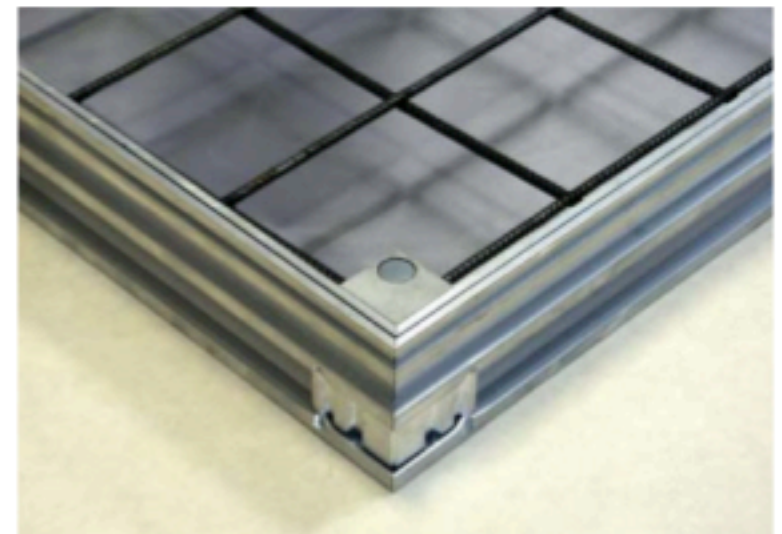
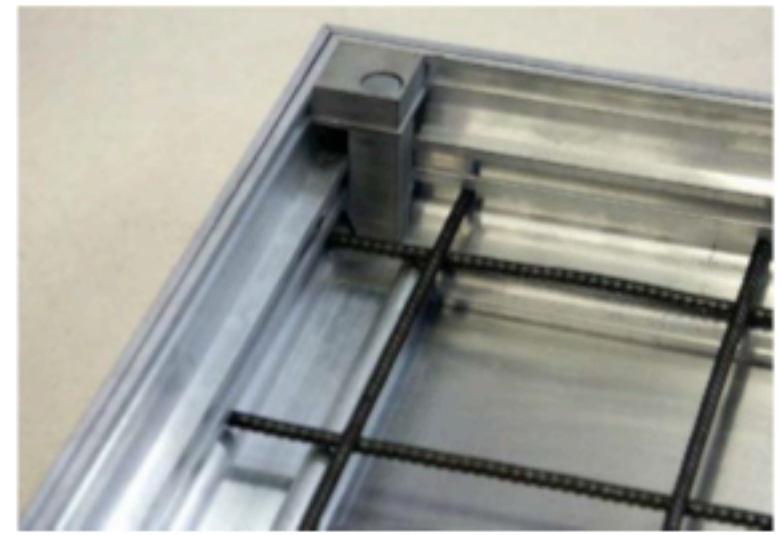


High quality light weight unfilled recessed aluminium access covers for internal and external applications

## Features and Benefits

- ▶ **Double sealed single cover**
- ▶ **Integrated grit seal prevents full ingress of grit and silt between cover and frame**
- ▶ **4-point locking with integrated low profile corner locking blocks. Captive replaceable brass nuts and stainless steel locking screws complete with protective caps provided**
- ▶ **8mm x 100mm centres square steel reinforcement fabric mesh with captive supports ensures mesh remains with cover during site handling and installation**
- ▶ **Precision manufacture ensures minimal gap between frame and cover providing high quality, unobtrusive visual finish**
- ▶ **Low profile, 73mm overall depth frame for easy installation**
- ▶ **Advanced mechanical assembly process provides rigid frame and cover construction with no weld heat distortion**
- ▶ **2 combined jacking and lifting keys supplied as standard for easy and convenient cover removal and replacement. Supplied complete with installation instructions and packaging**



Part No	Clear Opening (mm)	Overall Size w x l x h (mm)	Unfilled Wt kg	Approx Cover Wt (fully filled) kg	FACTA Load Class (50mm concrete infill)	FACTA Load Class (70mm concrete infill)
RET00817	300 x 300	398 x 398 x 73	4	13	AAA	B
RET00818	450 x 450	548 x 548 x 73	6	29	AA	B
RET00819	600 x 450	698 x 548 x 73	7	39	AA	B
RET00820	600 x 600	698 x 698 x 73	8	53	AA	B
RET00920	675 x 675	773 x 773 x 73	10	64	A	AAA
RET00821	750 x 600	848 x 698 x 73	10	66	AA	B
RET00823	750 x 750	848 x 848 x 73	11	83	A	AAA
RET00822	900 x 600	998 x 698 x 73	11	80	AA	B
RET00921	1000 x 1000	1098 x 1098 x 73	16	150	A	AA
RET00922	1220 x 675	1318 x 773 x 73	23	58	A	AAA

**Note:** Load Class figures assume cover filled to depths shown with fully cured concrete to Strength Class C25/30. Additional lifting key, Part No COM00338. Replacement plastic screw cap, Part No COM00350. Replacement locking screw part number COM00066. All part coded products are ex-stock.